



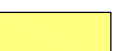

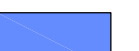

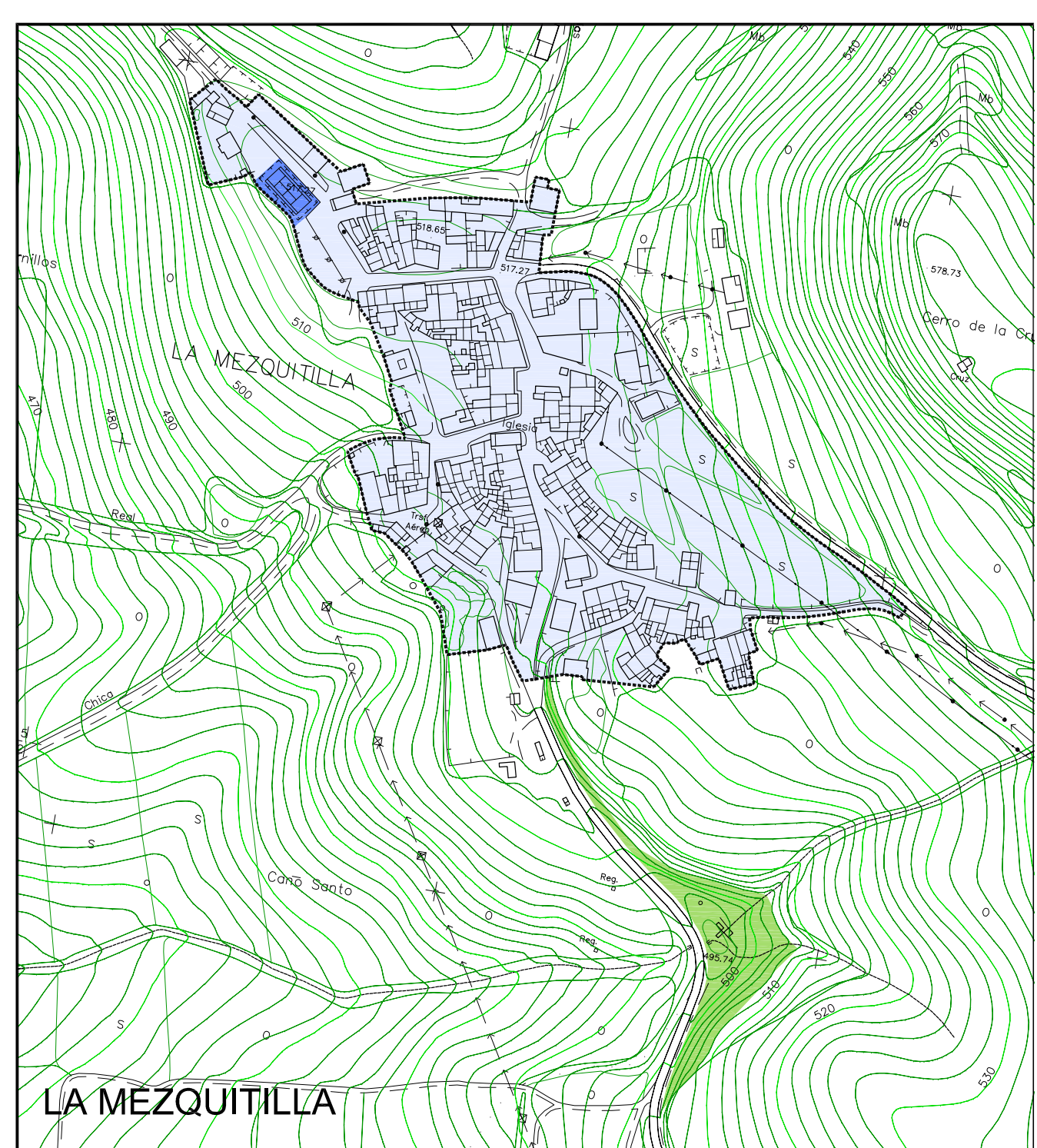


----- LIMITE SUELO URBANO  
 - - - - - LIMITE SUELO URBANIZABLE

USOS GLOBALES	
<b>Suelo Urbano y Urbanizable</b>	
	RESIDENCIAL en SUELO URBANO
	RESIDENCIAL en SUELO URBANIZABLE
	INDUSTRIAL en SUELO URBANO
	INDUSTRIAL en SUELO URBANIZABLE
	TERCIARIO en SUELO URBANIZABLE
SISTEMAS GENERALES	
	S. G. ESPACIOS LIBRES
	S. G. EQUIPAMIENTOS
	S. G. INFRAESTRUCTURAS - SERVICIOS URBANOS



**P G O U**  
 PLAN GENERAL DE ORDENACIÓN URBANÍSTICA

 **EL SAUCEJO** 

DOCUMENTO DE APROBACIÓN INICIAL SEP - 2017  
 PLANO DE INFORMACIÓN PLANO NÚMERO

NÚCLEO URBANO  
**PLANEAMIENTO VIGENTE.**  
**ESTRUCTURA URBANA** **i. 16**

ESCALA: 1/3.000